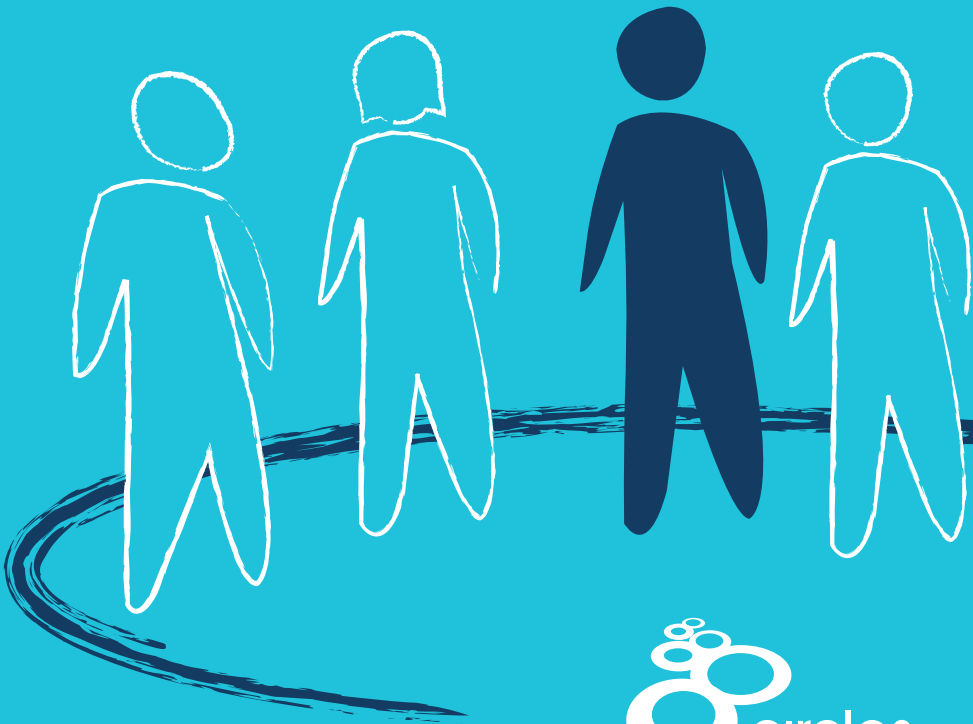


Circles of Support and Accountability
information for referrers – adult core members

“The Circle holds the offender to account for their behaviour but also helps them to develop ways to reduce their risk of committing further offences”

Police & Crime Commissioner



circles-southwest.org.uk

delivering circles of support
and accountability

Circles of Support and Accountability

information for referrers – adult core members

No more victims

Circles South West works in partnership with statutory services to assist in risk management of adults convicted of sexual offences by providing Circles of Support and Accountability. Those referred will usually be living in the community, though in some areas we have capacity to offer support starting in prison. Our mission is 'No More Victims' and reducing reoffending our objective.

Circles can enhance the work of statutory partners by:

- Addressing the significant gap in provision of long-term support/ monitoring of high-risk offenders.
- Tailoring support networks specific to need and risk.
- Providing a service to the police after end of supervision.
- Providing an essential source of intelligence, information, monitoring and support.
- Contributing to ongoing risk-assessment and risk-management plans.

A Circle offers support and holds individuals to account for their behaviour, attitudes and thoughts. Each Circle is designed in response to the individual's risk and needs according to an assessment made in conjunction with referrer and statutory partners.

Each Circle is managed by a qualified criminal justice professional, experienced in working with those who have sexually offended and comprises up to five volunteers and one "Core Member". Our volunteers are required to undergo mandatory training and vetting procedures to ensure suitability for this role. They meet with the Core Member regularly (usually once a week at the start of the Circle) for 12 to 18 months in a risk-assessed, confidential, community venue.

Volunteers will help the Core Member to safely and responsibly integrate into the local community by:

- Addressing practical matters, such as housing, employment, disclosure, self-management, distorted thinking and risky behaviours.
- Offering a 'safe', non-judgemental environment to meet and talk, build social skills, reduce isolation and increase confidence and self-esteem.

Circles of Support and Accountability

information for referrers – adult core members

Circle objectives are achieved by offering the Core Member a safe space in which to explore their law-abiding and purposeful future goals, develop social skills and consider appropriate employment, volunteering and social opportunities.

Referrals can be made by police, probation, youth offending services and health professionals. Referrer involvement is central to the success of each Circle.

The local coordinator will undertake interviews with the Core Member to share information about the process, assess risk, need and motivation. Prospective Core Members must be committed to building an offence free lifestyle and engage in open discussions with their volunteers on how to achieve this. Probation Practitioners and MOSOVOs are requested to participate in the initial meeting and quarterly reviews thereafter.

The central ethos of Circles is honesty and transparency. Core Members must consent for information about themselves to be shared confidentially between the referrers, coordinator and volunteers.

Volunteers provide their coordinator with minutes of each meeting and Probation Practitioners and MOSOVOs receive monthly progress reports from the coordinator.

There is no set agenda for meetings, rather an emphasis on looking towards positive change and moving away from offending or harmful sexual behaviour. Discussions about what led to criminal behaviour and how they will desist in the future are encouraged, learning from any treatment and sharing related plans.

Our volunteers are trained to understand risk management, encouraged to appropriately challenge the Core Member and report any progress and concerns to the coordinator so that these can be forwarded rapidly to offender managers/referring agency.

We invite an initial telephone discussion with the relevant local coordinator prior to referral.

All referrals meeting the stated criteria will be considered with priority given to those assessed as high or very high risk of serious harm and/or reconviction in consultation with the local MAPPA Coordinator.

Circles of Support and Accountability information for referrers – adult core members

Eligibility

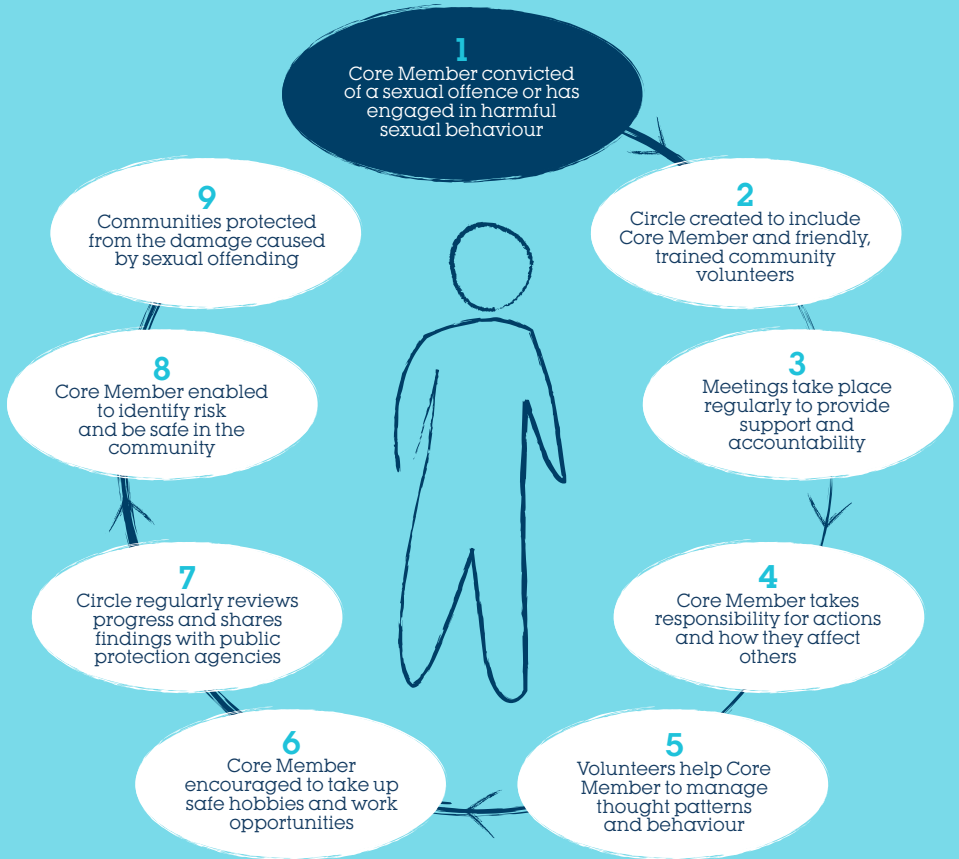
Offence type: sexual	Current conviction for a sexual offence against child or adult – includes non-contact offences. Historic sexual offences may also be considered if relevant risk and need criteria met. Medium, high or very high risk of serious harm.
Risk classification OSP/DC and OSP/IIC	All likelihood of sexual reoffending classifications will be considered
Gender	Any
Age	Over 21 years*
Attitudes & beliefs	Acknowledges that they have committed harmful sexual behaviour
Status	Statutory supervision by probation and/or police

Notes: Please discuss suitability with Circles South West before completing the referral form if there are issues relating to mental health, learning difficulties, personality disorder, substance misuse, etc. We have adapted the model for those with an intellectual disability who have a conviction for a sexual offence or a Mental Health Treatment Order for harmful sexual behaviour.

*We provide similar Young People's Circles for 10-20 year olds who have been convicted of sexual offending and/or display harmful sexual behaviour.

Circles of Support and Accountability information for referrers – adult core members

How Circles work



Circles of Support and Accountability information for referrers – adult core members

Suitability

Motivation Committed to creating no more victims and to stop their harmful sexual behaviour

Level of engagement Prepared to engage with a Circle on a voluntary basis

Situation Living in the community or is within six months of release into the community

Areas of need include Sexual preoccupation
Poor self-esteem
Emotional congruence with children
Lack of appropriate intimate relationships
Lack of pro-social network
Emotional loneliness
Social isolation
Impulsivity
Poor problem-solving
Lack of employment/ hobbies

Email: info@circlessw.org.uk

Tel: 07717 442413

Avon, Cornwall, Devon, Dorset,
Gloucestershire, Somerset, Wiltshire

circles-southwest.org.uk

Registered charity no: 1138726. Company no: 07369778

**NO
MORE
VICTIMS**