



**“We see Circles of Support and Accountability as an excellent child protection and prevention initiative”**

**Lead on Tackling Sexual Abuse, NSPCC**



## **Young People's Service – information for referrers**

---

### **Young People's Service**

Our Young People's Service accepts referrals for young people aged between 10 and 20 who have sexually offended or have displayed harmful sexual behaviour. Ideally the young person needs to accept responsibility for their behaviour.

A Circle is made up of a young person and a group of three to four specially trained community volunteers. The purpose of the Circle is to provide a supportive social network that enables purposeful reintegration into the community while managing the risk of further harmful sexual behaviour.

The Circle will hold the young person to account, support positive progress and challenge the individual about inappropriate attitudes, beliefs, thoughts and feelings.

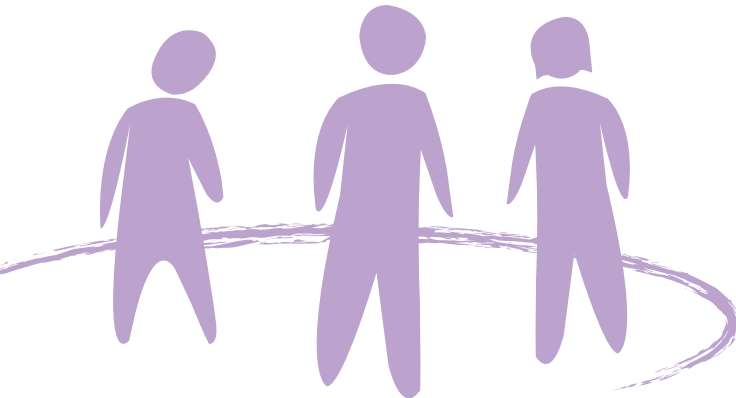
### **Who is it for?**

The young person doesn't need to have been involved with the Criminal Justice System but should have had (or be engaging with) an intervention to address their harmful sexual behaviour. Though helpful, it is not essential for a young person to have taken full responsibility for their harmful sexual behaviour.

The Young People's Service is divided into two parts:

### **Youth Service: young people aged 10 to 17**

The Circle will provide a supportive social network to reduce isolation, build self-esteem, help the young person to develop social and independence skills. We welcome referrals from Be Safe, social services and youth offending services.



**Young Adults Service: young people aged 18 to 20**

Circle volunteers will encourage young people to talk about their goals and any concerns, provide practical support with issues like jobs and housing, and help the individual build confidence and develop social skills. We welcome referrals from probation, social care, residential treatment providers and police.

**How does it work?**

The Circle meets for one to two hours every week for up to 12 months. Each Circle will be tailored to the individual needs and risks of the young person. Initial meetings may take place in a safe public place, such as a council office. Future meetings will then be at local cafes or activities. Formal reviews, to include professionals, will take place on a quarterly basis.

**Is it mandatory?**

The Circle is entirely voluntary and cannot be a condition of a Community Sentence or Licence. The young person must want to stop behaving in ways that are harmful sexually and must be prepared to share details of their harmful sexual behaviour with their Circle.

**How do I refer?**

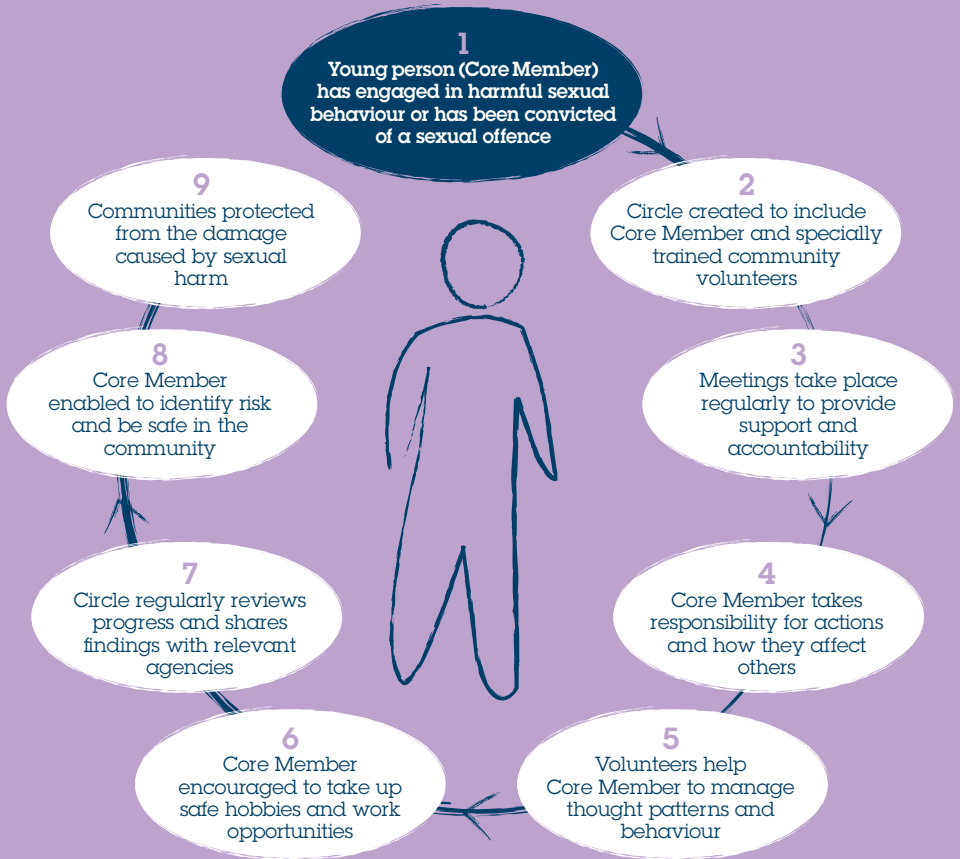
If you are working with a young person you think would benefit from a Circle, please contact our Young People's Service Coordinator on 07584 629442.

## Eligibility

<b>Offence type: sexual</b>	Current conviction for a sexual offence or admission of causing sexual harm (can include non-contact offences).
<b>Risk classification</b> <b>Under 18s: ASSET/</b> <b>AIM2/Be Safe</b> <b>Over 18s: OASys</b>	All assessments must conclude that the risk of sexual harm posed to others is medium, high or very high. AIM2 will indicate Medium Management Needs or greater.
<b>Gender</b>	Any
<b>Age</b>	10 to 20 years
<b>Attitudes and beliefs</b>	Some acknowledgement that s/he has committed harmful sexual behaviour. Minimisation and victim blame does not preclude referral.
<b>Status</b>	Is engaging with (or has recently completed) an intervention to address harmful sexual behaviour.  and/or  Referrals may be subject to statutory supervision by YOS/probation and/or police (for example, Registered Sex Offenders) but this is not required.

**Note:** please discuss suitability with Circles South West before completing the referral form if there are presenting issues relating to mental health, learning difficulties, personality disorder, substance misuse, etc.

# How Circles work



# Suitability

<b>Motivation</b>	Committed to creating no more victims and stopping his/her harmful sexual behaviour.
<b>Level of engagement</b>	Prepared to engage with a Circle on a voluntary basis over an extended period.
<b>Situation</b>	Living in the community. Expected placement stability for a minimum of 12 months.
<b>Areas of need include</b>	Sexual preoccupation Low self-esteem Lack of appropriate intimate relationships Lack of pro social network Emotional loneliness Social isolation Impulsivity Poor problem-solving Lack of education/training/employment or hobbies Complex family relationships

Email: [info@circlesw.org.uk](mailto:info@circlesw.org.uk)

Tel: 07717 442413

 @CirclesSW

Avon, Cornwall, Devon, Dorset,  
Gloucestershire, Somerset, Wiltshire

[www.circles-southwest.org.uk](http://www.circles-southwest.org.uk)

Registered charity no: 1138726. Company no: 07369778

**NO**  
**MORE**  
**VICTIMS**